

Gulfstream®

PLANECONNECT™



*The PlaneConnect Advantage:
Timely Reports for Immediate Action*

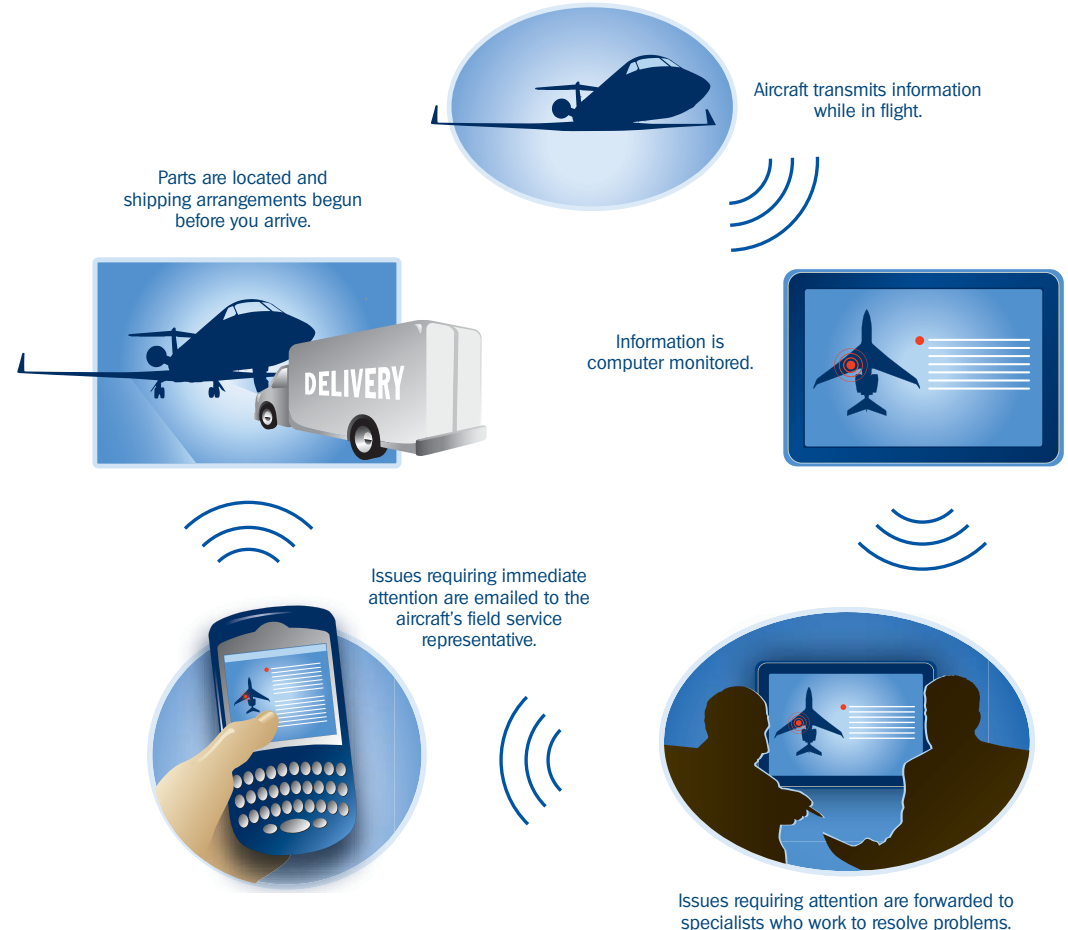
PLANECONNECT

Excellent Flight Performance Starts From The Ground, Up

From takeoff to landing and the incredible flight in between, the best way to monitor your aircraft's performance is when it is doing just that, performing. PlaneConnect™ is a highly advanced system that transmits reports on your aircraft to experts on the ground all while you're still comfortably in the air.

By providing the capability for a manual as well as an automatic update of the condition of your aircraft during flight, PlaneConnect enables speedy resolution of any maintenance issues which may arise. Not only does the aircraft report active faults, it also identifies which system and in many cases which component is at fault. Crew Advisory System (CAS) messages along with Maintenance Messages are downlinked automatically via the PlaneConnect report as soon as the aircraft starts its descent to its destination. In the event of an issue needing immediate attention, the pilot can manually send a maintenance status downlink. Reports are distributed via e-mail to whoever on your team may need the information.

Gulfstream PlaneConnect System



FASTER RESPONSE – BETTER PERFORMANCE – MORE AIR TIME. GET CONNECTED, STAY CONNECTED.

Remote Fault Diagnosis

The level of redundancy in the aircraft means that a fault does not have to be acted on immediately, but with PlaneConnect on board there is an accurate report of what system has reported a fault. Analysis of that fault can occur on the ground as soon as it's received. Remote diagnosis of a problem and ordering of replacement components can be accomplished while the aircraft is in flight, improving not only aircraft availability but also dispatch reliability.

Aircraft Health Monitoring

Operators can elect to have their PlaneConnect reports sent to Gulfstream Technical Operations where computers review the reports automatically upon receipt and highlight issues needing attention to specialists. All this happens within minutes of the aircraft sending out its report – regardless of where in the world it may be operating. The specialists review as many as 100 PlaneConnect reports per day and can identify actionable maintenance messages very quickly. In some cases, the aircraft has performed as expected with no issues on the flight deck, yet some maintenance messages are received. In these cases,

further maintenance investigation has revealed issues which were not apparent to the crew but do need to be resolved when schedule permits.

If Technical Operations has been provided access to your aircraft's position information or you have requested Flight Following, parts stock locations near the aircraft's destination are alerted to the need for a part. Parts are only shipped with your approval.

Fleet Information

As well as resolving individual aircraft issues and monitoring aircraft health, Gulfstream utilizes the information from the PlaneConnect fleet to identify new trends with system reliability so that investigations can be ordered sooner and fleet corrective actions implemented faster. Your aircraft information is stored for a limited time and then any association with the individual aircraft is removed. The de-identified data is then used for fleet statistics comparisons. Your individual aircraft information is not made available outside of Gulfstream or its supplier base.

PlaneConnect Monitors Everything – From Anywhere.

All you have to do, is fly.

PlaneConnect Features

Fast, Accurate Aircraft Status Reporting – Worldwide

24/7/365 Aircraft Monitoring

Remote Diagnosis

Faster Parts Ordering

Increased Dispatch Reliability and Aircraft Availability

PLANECONNECT

Available today for G350, G450, G500, G550 and entry into service on G650.



Learn more now. Visit www.gulfstream.com/planeconnect.

Gulfstream[®]
A GENERAL DYNAMICS COMPANY

500 Gulfstream Road, Savannah, GA 31407 USA
Telephone: 1 (800) 810-GULF (4853)
www.gulfstream.com © 2008 Gulfstream Aerospace Corporation
PlaneConnect is a trademark of Gulfstream Aerospace Corporation

09.08.2M
08-08281