

Gulfstream® | *AFMatic™*



Performance, Fuel Cost Savings, Weight and Balance for Gulfstream Aircraft

***AFMatic* Used In Gulfstream Flight Operations**

“ I use *AFMatic* on a routine basis both in the office and on the road. It's an excellent tool for off-airplane performance planning either in the FBO or at the hotel. I also use *AFMatic* a lot in the office to answer questions from customers regarding takeoff or landing capabilities at airports that are seldom used by Gulfstream operators. We used *AFMatic* to calculate the takeoff performance for our GV when we did the record run from Hilton Head, S.C. to Milan, Italy. I have a great deal of confidence in the performance calculations *AFMatic* produces and it has more features than the takeoff and landing performance program we get from Honeywell through the FMS. ”

John O'Meara
Gulfstream Chief Test Pilot

AFMatic's clean and simple user interface is evident in the Takeoff Airport entry screen. We made it easy to use so you can spend your time doing what you do best - flying the airplane.



Key Benefits:

- Fuel Cost Savings
- Easy Takeoff & Landing Performance
- Flexible Weight & Balance
- PlaneBook™ Compatible
- Regulatory Compliance
- Consistent, Reproducible Results

Additional Features:

- Worldwide Airport Database
- Alternate Airport Search
- Weather Reports & Graphics
- Brake Cooling
- Pavement Strength
- Sunrise / Sunset Times
- Great Circle Route Calculation

All-In-One Tool Saves You Time and Money

AFMatic™ has been created specifically for Gulfstream pilots, to compute preflight airplane flight manual based performance and has been developed by Tybee Jet Corporation in cooperation with Gulfstream Aerospace engineers and pilots.

From takeoff performance, to weight and balance, to saving money on fuel, there's never been an easier or more capable way to compute Gulfstream aircraft performance.

Fuel Cost Savings

When fuel prices are high, *JetMiser*™, *AFMatic*'s unique fuel cost reduction feature, is more than a tool, it's an investment. *JetMiser* uses the concept of fuel tankering to determine the optimum amount of fuel to load at each fuel stop of a multi-stop trip in order to minimize the total fuel cost for the trip. Not only does *AFMatic* save you time, it saves you money, too.

PlaneBook Compatible

AFMatic is fully compatible with PlaneBook™, and is available as an option with the purchase of a PlaneBook computer. Add *AFMatic* to PlaneBook and you have the ultimate pilot tool.

Takeoff and Landing Performance

Takeoff and landing calculations, including effects of contaminated runways, are accomplished by selecting the airport and runway from the integral worldwide airport database, entering atmospheric and configuration information, and selecting "Compute". Easy and accurate, *AFMatic*'s calculations have been tested with the same methods used to test the Honeywell FMS.

Weight and Balance

AFMatic has extensive and flexible weight and balance calculation capabilities. An easy-to-use point-and-click interface is backed by AC120-27E compliant calculations. Multiple configurations are a snap to set up.

SID and Obstacle Performance

AFMatic gives you four methods of computing SID climb performance, making it the most powerful SID climb calculator in the industry. It also computes obstacle clearance for up to twenty permanent and five temporary obstacles for each runway, using the Net Takeoff Flight Path from the Airplane Flight Manual. Obstacle and SID required climb gradient data are easily added and stored in the airport database by the user.

Regulatory Compliance

AFMatic is a great tool for demonstrating compliance with regulations, whether you are a FAR 91 or Part 135 operator. And if you are ramp checked, it's a quick way to satisfy the inspector.

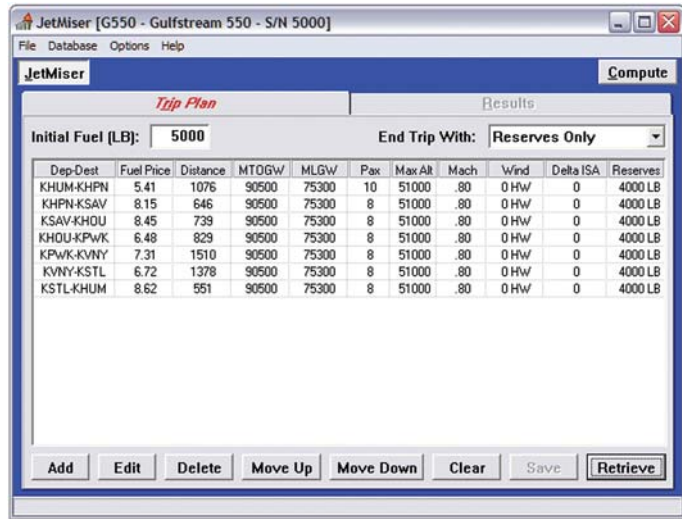
Availability by Model

AFMatic is now available for large-cabin Gulfstreams: G550®/G500®, GV®, G450®/G350®, G400®/G300®, GIV®, GIV-SP®, GIII® and GIIB®, as well as the military derivatives. The program will also be updated to add new large-cabin Gulfstream aircraft as they are introduced.

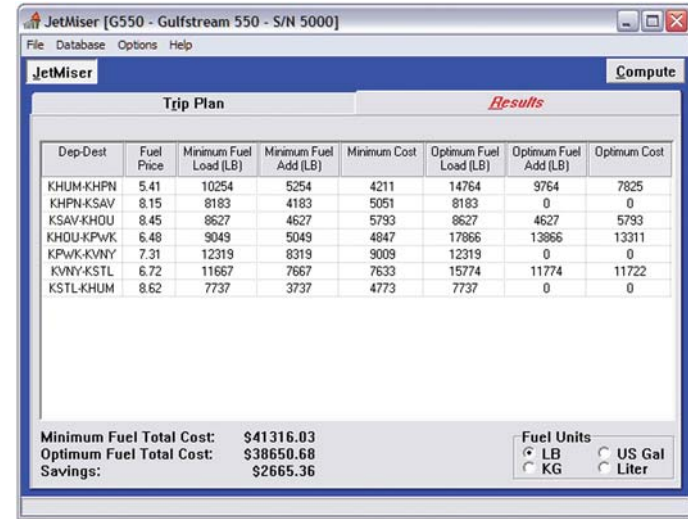
With fuel prices at high levels all around the world, many corporate jet operators are tankering fuel to save money. Wouldn't it be nice to have a tool that tells you exactly how much fuel to buy at each fuel stop in order to minimize the total cost of fuel for a trip? That's *JetMiser*!

An Example Tells the Story

Here's a flight that leaves Houma, Louisiana, makes five intermediate stops, and returns to Houma. To set up the calculation, you'll enter basic information about each leg, including selecting the departure and destination airports from the integrated worldwide airport database.



Once the inputs have been made, click the "Compute" button, and leave the difficult part to *JetMiser*. In just a few seconds, the results are in, and you can easily see how to save the most by tankering fuel. The results show the minimum fuel for each leg, which is what you should see on your flight plan, and then the optimum fuel for each leg, which will save the most money. As you can see in the example, at several of the stops, no fuel is needed. The summary at the bottom shows the final tally, over **\$2,500 SAVED** on this one trip!



JetMiser has been developed by Tybee Jet Corporation in cooperation with Gulfstream performance engineers using Gulfstream technical data.

Priced at \$1,500 (\$1,300 for PlaneBook owners), *JetMiser* is an investment that can easily pay for itself the first time it is used.

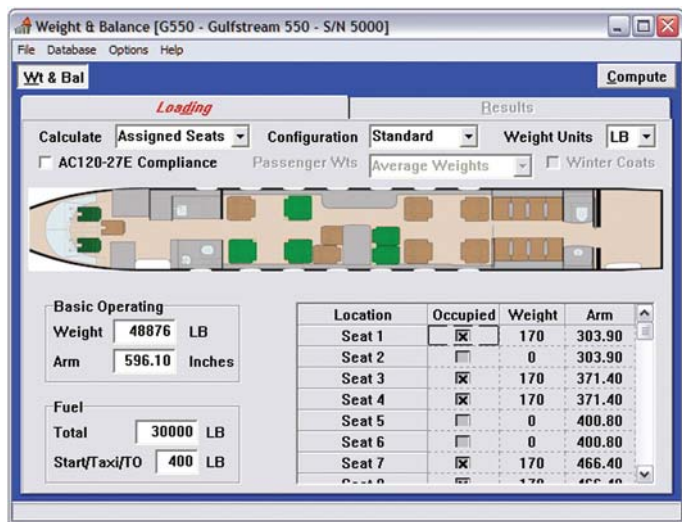
Weight & Balance

An AFMatic Product

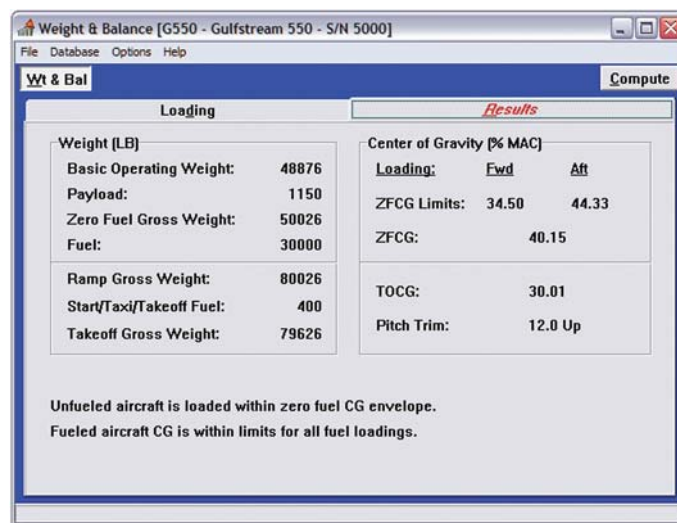
Weight and balance calculations have never been easier for your Gulfstream than with Tybee Jet's new product, *Weight & Balance*. Featuring customized graphical floor plans with point-and-click seat selection, multiple configurations, compliance with Advisory Circular 120-27E "Aircraft Weight and Balance Control", and much more, *Weight & Balance* is as flexible as it is easy to use.

An Example Tells the Story

Seats are selected by clicking on them in the floor plan. Passenger weights will default to a selected value, but may be individually changed to accommodate actual passenger weights. For compliance with the advisory circular, weights are user selectable between average weights, segmented weights and actual weights. You may also compute weight and balance based on a worst-case scenario. You simply specify the number of passengers and they are loaded in the forwardmost seats and the center of gravity (CG) is compared against the forward limit. Then they are loaded in the aftmost seats and the CG is compared against the aft limit. You may also specify the number of passengers and have them loaded in seats according to a preset order.



Once the inputs have been made, click the "Compute" button, and leave the calculations to *Weight & Balance*. In just an instant, the results are in, and you can easily see whether you are loaded within the CG limits. The results show the weight buildup on the left, and center of gravity on the right. For AC120-27E compliance, the CG limits are curtailed in accordance with the advisory circular. The limits are also calculated for landing gear up and down.



Weight & Balance has been developed by Tybee Jet Corporation in cooperation with Gulfstream Flight Operations, especially for use on PlaneBook.

Priced at \$750 (\$650 for PlaneBook owners), *Weight & Balance* is easy on the budget!

To purchase *JetMiser*, *Weight & Balance* or *AFMatic* contact Gulfstream Technical Publications at 912-965-3204.



Gulfstream and PlaneBook are trademarks of Gulfstream Aerospace Corporation.
AFMatic and Jetmiser are trademarks of Tybee Jet Corporation.

Gulfstream[®]
A GENERAL DYNAMICS COMPANY

500 Gulfstream Road, Savannah, GA 31407 USA
Telephone: 1 (800) 810-GULF (4853)
www.gulfstream.com © 2008 Gulfstream Aerospace Corporation

05.08.4M
08-07901